

The Stinson logo is rendered in a bold, dark brown, sans-serif font. A registered trademark symbol (®) is positioned at the top right of the letter 'n'. The logo is set against a white rectangular background.

Stinson[®]

Healthcare
Certified
Coated Fabrics

The Stance logo is rendered in a dark brown, sans-serif font. The letter 'a' is lowercase and features a distinctive shape with a vertical line through its center. The logo is set against a white rectangular background.

Stance



CFFA HEALTHCARE STANDARD CERTIFICATION PROGRAM

- The CFFA-HC-201 Certification Program will assist specifiers and designers in more easily identifying appropriate coated fabrics for the Healthcare environment, as well as other commercial spaces.
- Products/patterns certified to CFFA-HC-201 must pass a series of tests that have been identified as important and relevant for the Healthcare environment.
- This standard was developed in conjunction with industry consultants and design directors of major hospital systems, with the goal of reducing product failures.

Stinson[®]

Click on any image to see specifications and fabric grade and to order a memo sample.



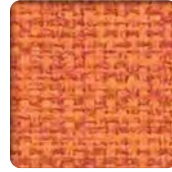
Flanders
Fossil



Flanders
Cove



Flanders
Bungalow



Flanders
Lifesaver



Flanders
Hula



Flanders
Seaside



Flanders
Bermuda



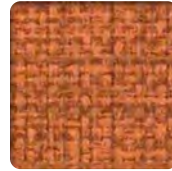
Flanders
Slate



Flanders
Shore



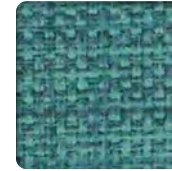
Flanders
Coconut



Flanders
Rum



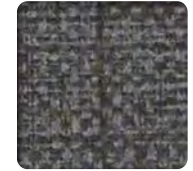
Flanders
Salsa



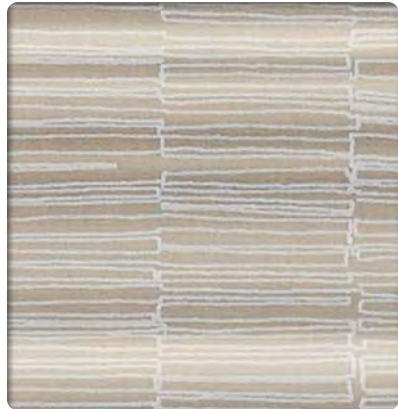
Flanders
Polynesia



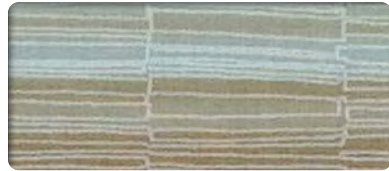
Flanders
Voyage



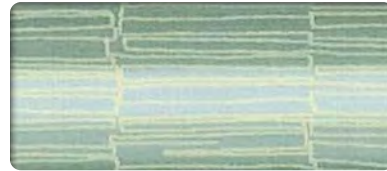
Flanders
Charcoal



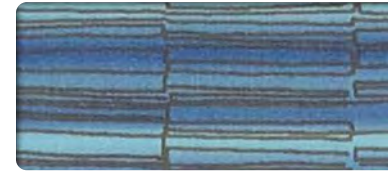
Frequency 2.0
Ionic



Frequency 2.0
Seashore



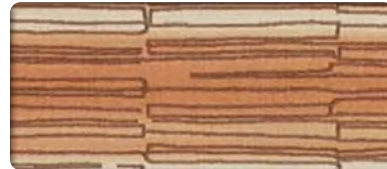
Frequency 2.0
Celadon



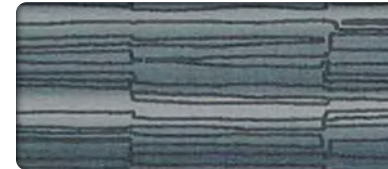
Frequency 2.0
Sapphire



Frequency 2.0
Gingersnap



Frequency 2.0
Copper



Frequency 2.0
Nautical



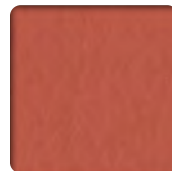
Lara
Kitten



Lara
Titanium



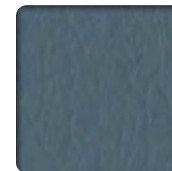
Lara
Stone



Lara
Red Earth



Lara
Hydro



Lara
Wizard



Lara
Mystery



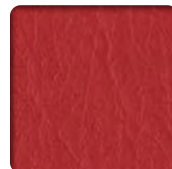
Lara
Tempest



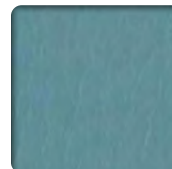
Lara
Haze



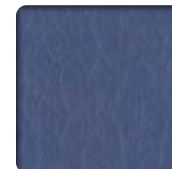
Lara
Mink



Lara
Tamale



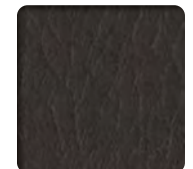
Lara
Tranquil



Lara
Champion



Lara
Evening



Lara
Pitch

Click on any image to view specifications and fabric grade and to order a memo sample.



Satchel
Flint



Satchel
Bone



Satchel
Shark



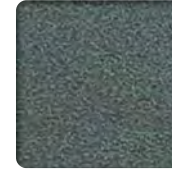
Satchel
Marigold



Satchel
Cognac



Satchel
Bluestone



Satchel
Mallard



Satchel
Dusk



Satchel
Elm



Satchel
Flint



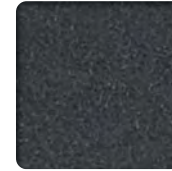
Satchel
Branch



Satchel
Clay



Satchel
Holly



Satchel
Collegiate



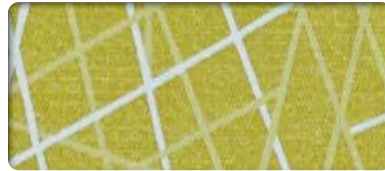
Satchel
Onyx



Vector
Intersect



Vector
Suede



Vector
Lime



Vector
Parallel



Vector
Ray



Vector
Spice



Vector
Blue



Box Chain
Stardust



Box Chain
Ionic



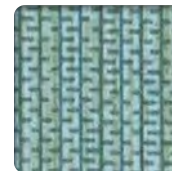
Box Chain
Twine



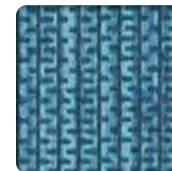
Box Chain
Pomelo



Box Chain
Rose



Box Chain
Juniper



Box Chain
Amalfi



Box Chain
Tranquil



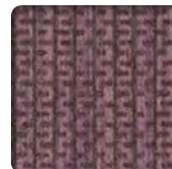
Box Chain
Frost



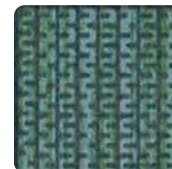
Box Chain
Antelope



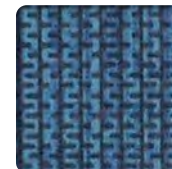
Box Chain
Daybreak



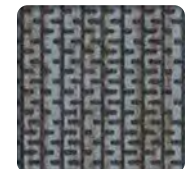
Box Chain
Plum



Box Chain
Evergreen



Box Chain
Marine



Box Chain
Stardust

Click on any image to view specifications and fabric grade and to order a memo sample.



Weft
Salvia



Weft
Chill



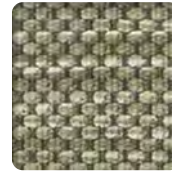
Weft
Bisque



Weft
Clay



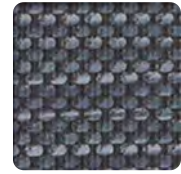
Weft
Honey



Weft
Cedar



Weft
Breeze



Weft
Indigo



Weft
Silver



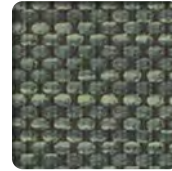
Weft
Clay



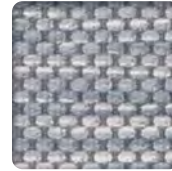
Weft
Sumac



Weft
Brownie



Weft
Jungle



Weft
Dusk



Weft
Incense



Lattice
Metro



Lattice
Fresco



Lattice
Rosewood



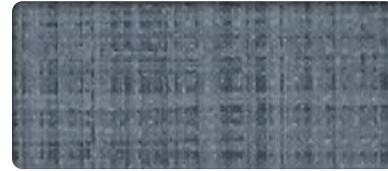
Lattice
Bayou



Lattice
Buckwheat



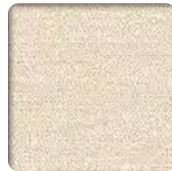
Lattice
Clay



Lattice
Skipper



Nishiki 2.0
Obi



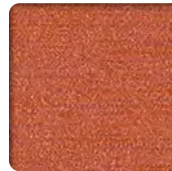
Nishiki 2.0
Gyoza



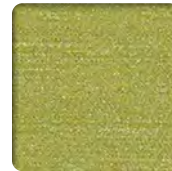
Nishiki 2.0
Celadon



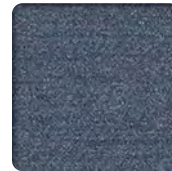
Nishiki 2.0
Spice



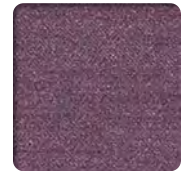
Nishiki 2.0
Koi



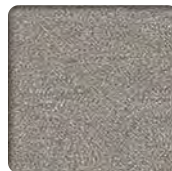
Nishiki 2.0
Lemongrass



Nishiki 2.0
Shibori



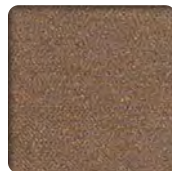
Nishiki 2.0
Plum



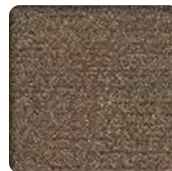
Nishiki 2.0
Silver



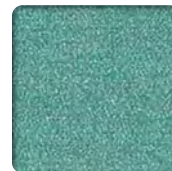
Nishiki 2.0
Soba



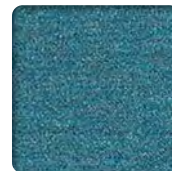
Nishiki 2.0
Teak



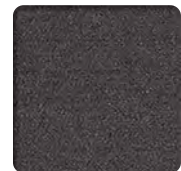
Nishiki 2.0
Sumi



Nishiki 2.0
Oribe

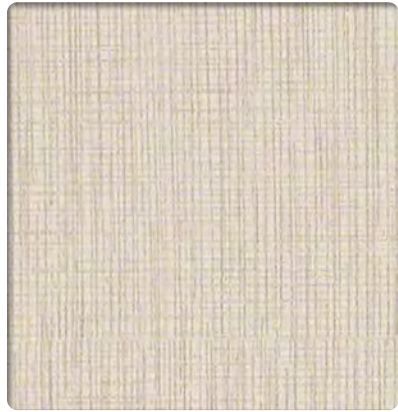


Nishiki 2.0
Peacock



Nishiki 2.0
Samurai

Click on any image to view specifications and fabric grade and to order a memo sample.



Didi
Neutral



Didi
Creme



Didi
Frontier



Didi
Tungsten



Didi
Willow



Didi
Spa



Didi
Micron



Didi
Titanium



Didi
Neutral



Didi
Putty



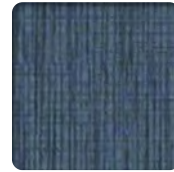
Didi
Antelope



Didi
Morel



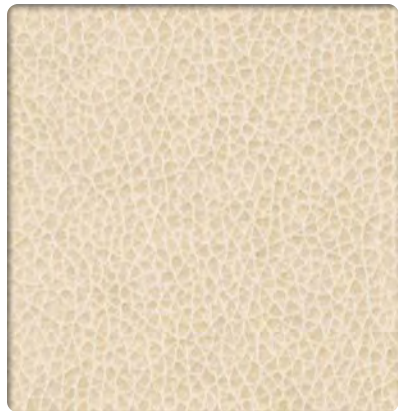
Didi
Azure



Didi
Radiant



Didi
Carbon



Modena 2.0
Panna



Modena 2.0
Argentato



Modena 2.0
Paglierino



Modena 2.0
Bronzo



Modena 2.0
Arancione



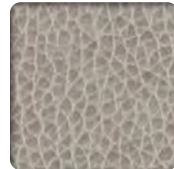
Modena 2.0
Giallo



Modena 2.0
Azzurro



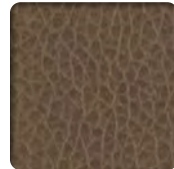
Modena 2.0
Verde



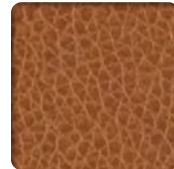
Modena 2.0
Grigio



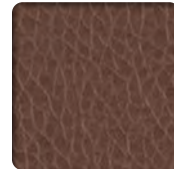
Modena 2.0
Caffè



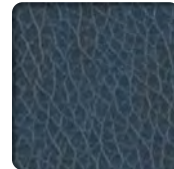
Modena 2.0
Marrone



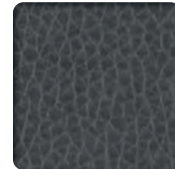
Modena 2.0
Terra di Siena



Modena 2.0
Mogano



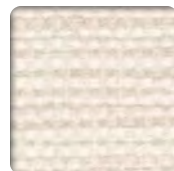
Modena 2.0
Blu Notte



Modena 2.0
Carbone



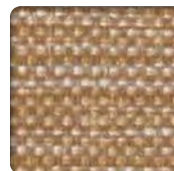
Bond
Wolf



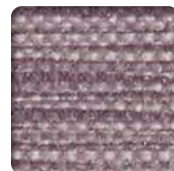
Bond
Pavlova



Bond
Celery



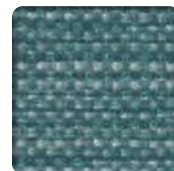
Bond
Oat



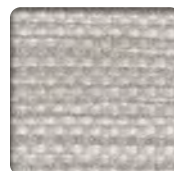
Bond
Allium



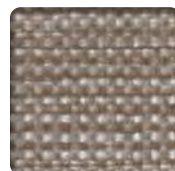
Bond
Sage



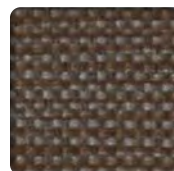
Bond
Mallard



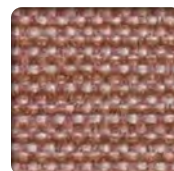
Bond
Lancelot



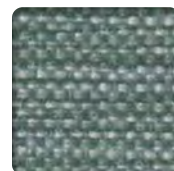
Bond
Soba



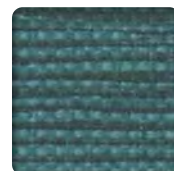
Bond
Shadow



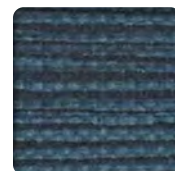
Bond
Flora



Bond
Laurel



Bond
Aura



Bond
Nocturne

View the entire collection of CFFA Healthcare certified patterns [here](#).

